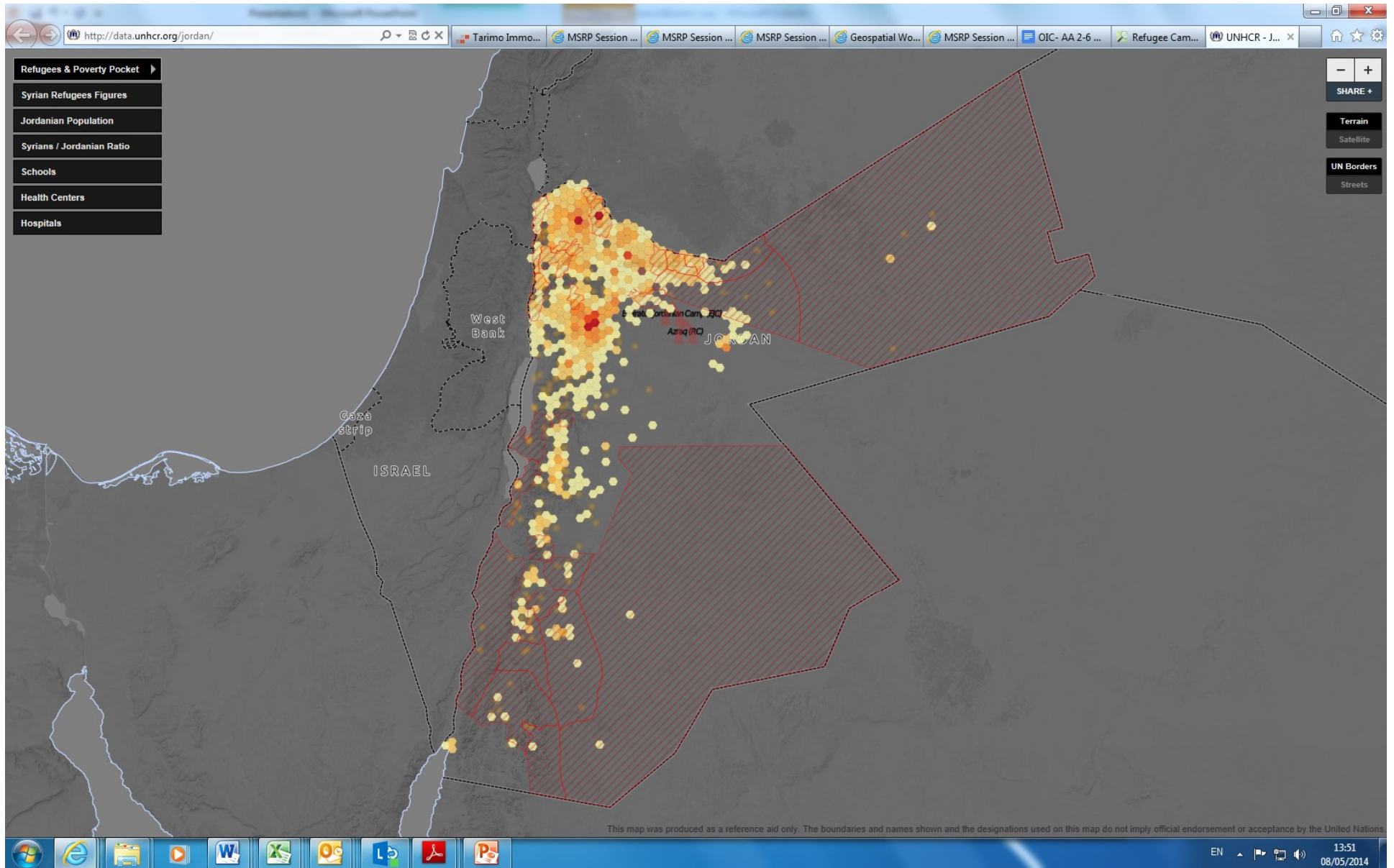
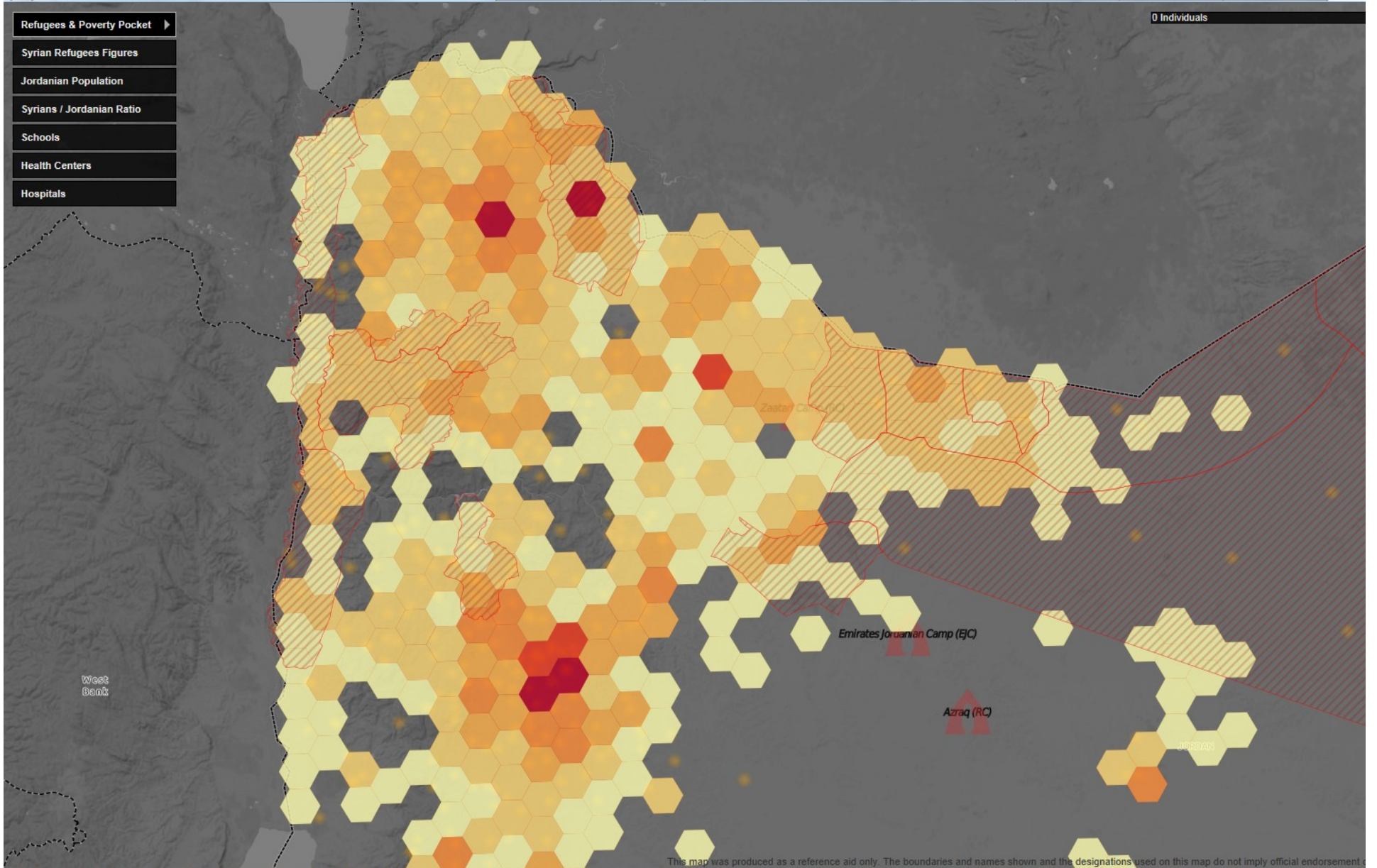


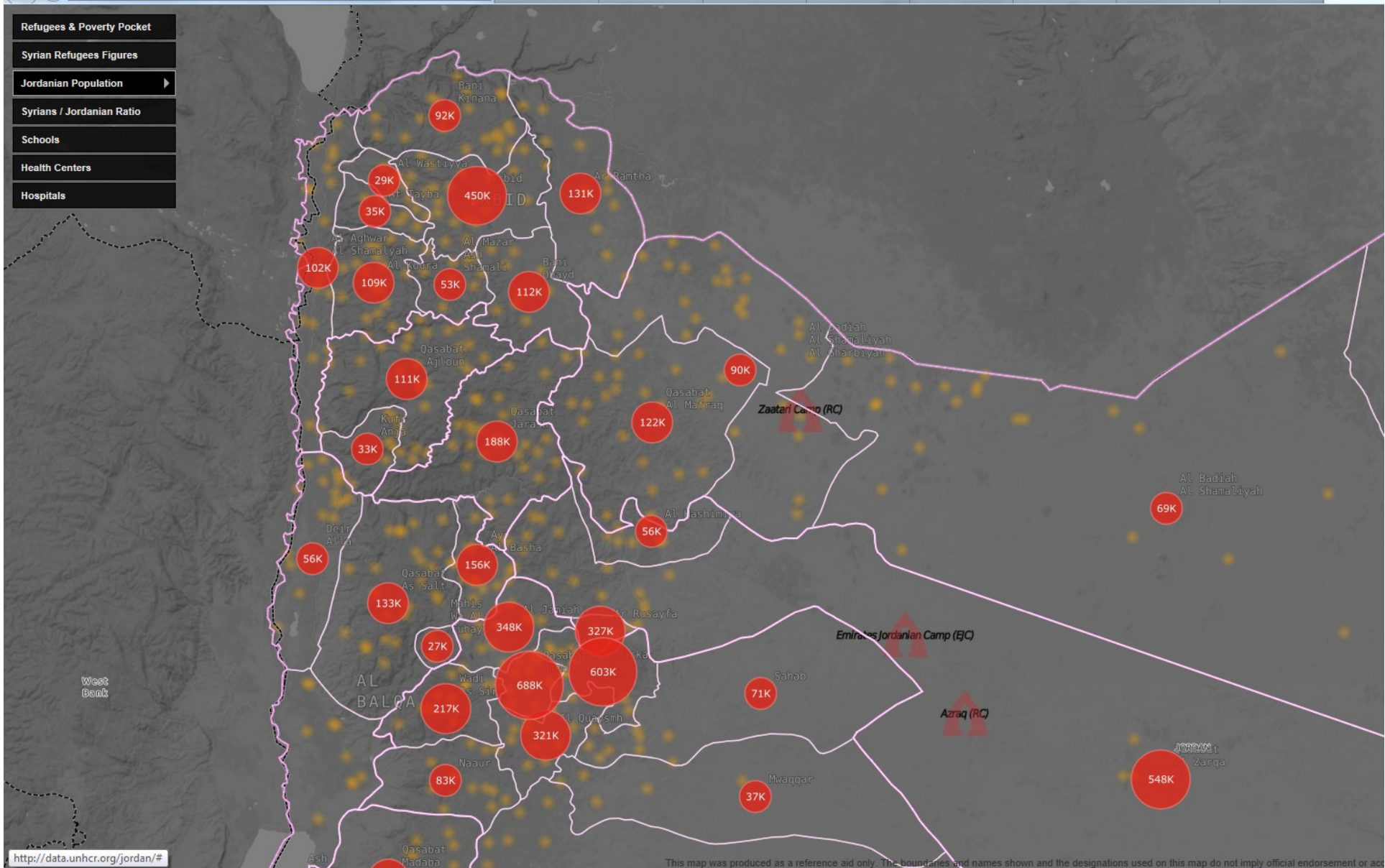
Some examples

# Mapping in Jordan



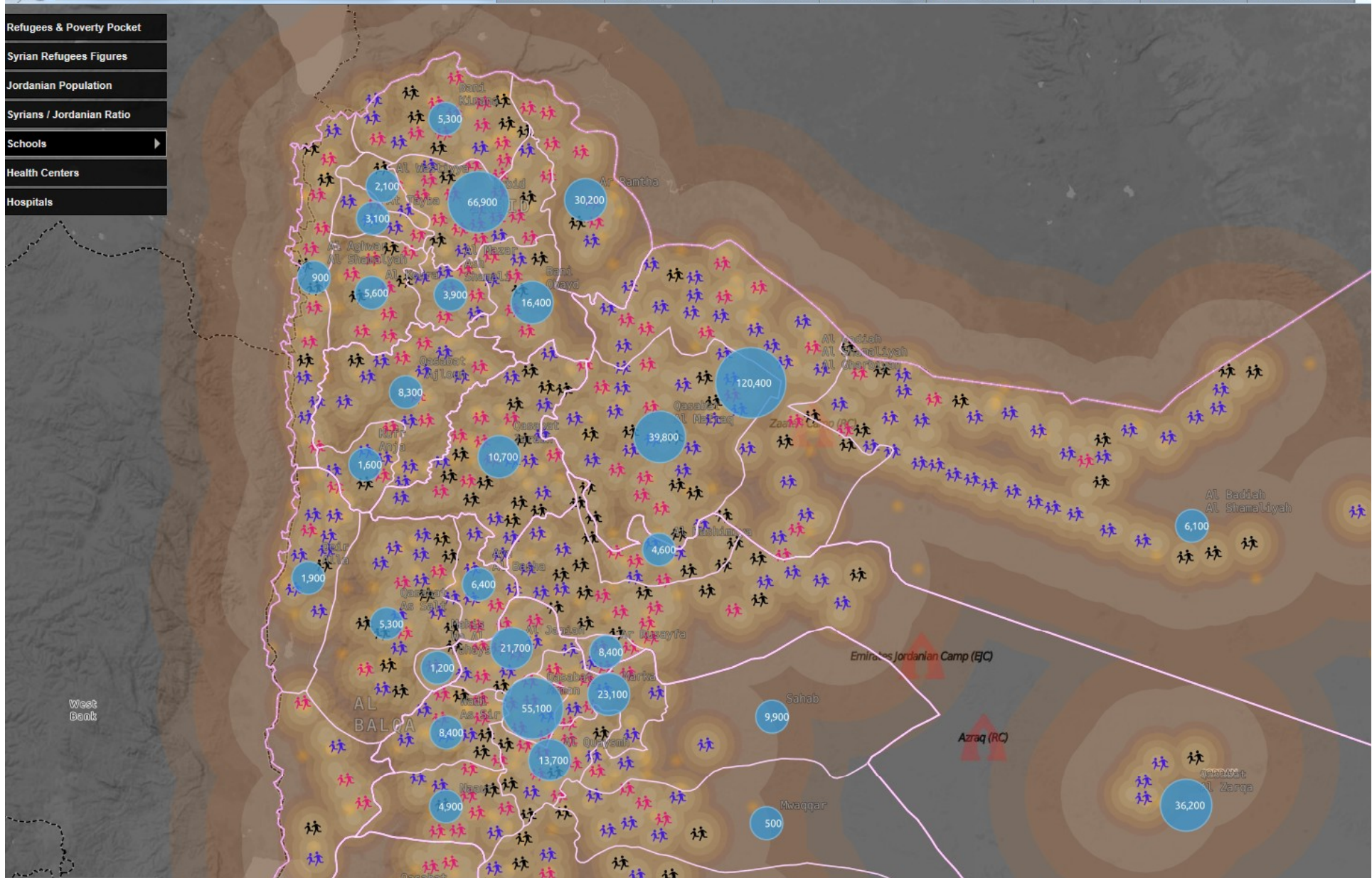




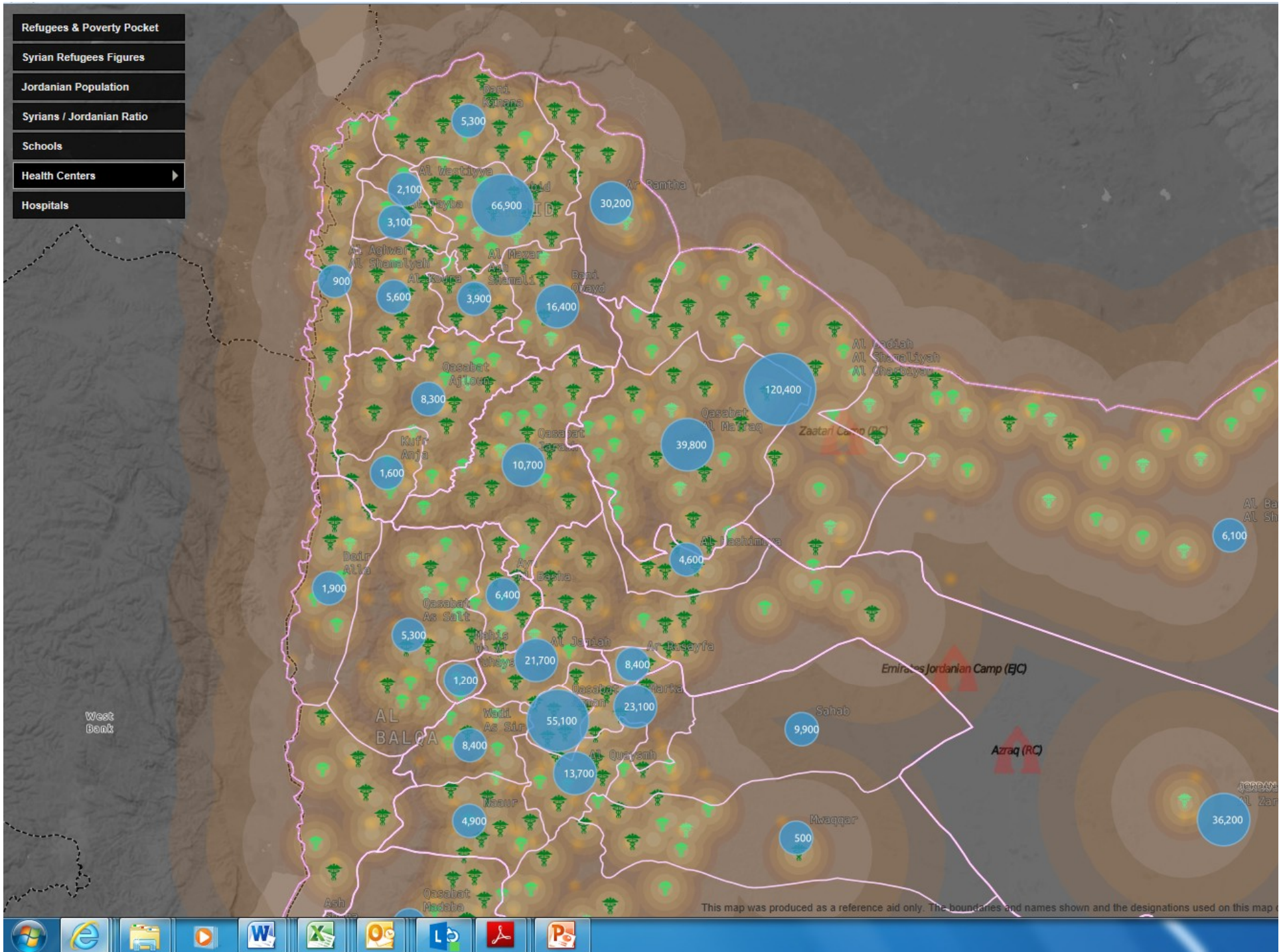




- Refugees & Poverty Pocket
- Syrian Refugees Figures
- Jordanian Population
- Syrians / Jordanian Ratio
- Schools
- Health Centers
- Hospitals







## Somalia



# SOMALIA Population Movement Trends

Total Movements Reported

**1,200**

May 2014

### Displacement by Month

Click on different months or use the slider to filter the map and figures for the period selected

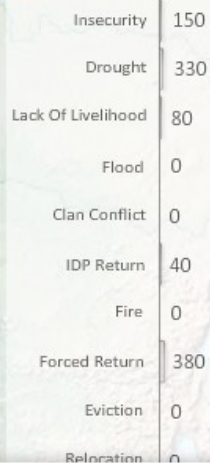


### Displacement by Day



### Reasons for Movement

Click on different reasons to filter the map and figures.



### Monthly Highlights



FULL SCREEN

Areas Receiving IDPs Source of IDPs

These figures are estimates derived from IASC's Population Movement Tracking (PMT) System. They are intended to show population movement trends, not cumulative IDP population data. Due to the fluid nature of displacement in Somalia and in order to avoid capturing multiple displacements, these figures should therefore not be added and used cumulatively.





Hagadera Camp, Dadaab. Photo UNHCR/B.Heger

The legacy of the world's conflicts can be seen in the scores of camps for refugees around the world. This story profiles the 50 most populous settlements administered by the United Nations High Commission for Refugees. Contrary to popular belief, many of these settlements are far from temporary, and most of the largest ones are in Africa and South Asia. In total, these camps are home to over 1.9 million uprooted people. The massive Dadaab complex in Kenya (which includes the Hagadera, Dagahaley, and Ifo camps) has existed for years, even decades. As the imagery in these views shows, many refugee settlements are located on arid or marginal lands. With scarce local resources from which to draw, most residents of these facilities depend on **external aid for survival**.

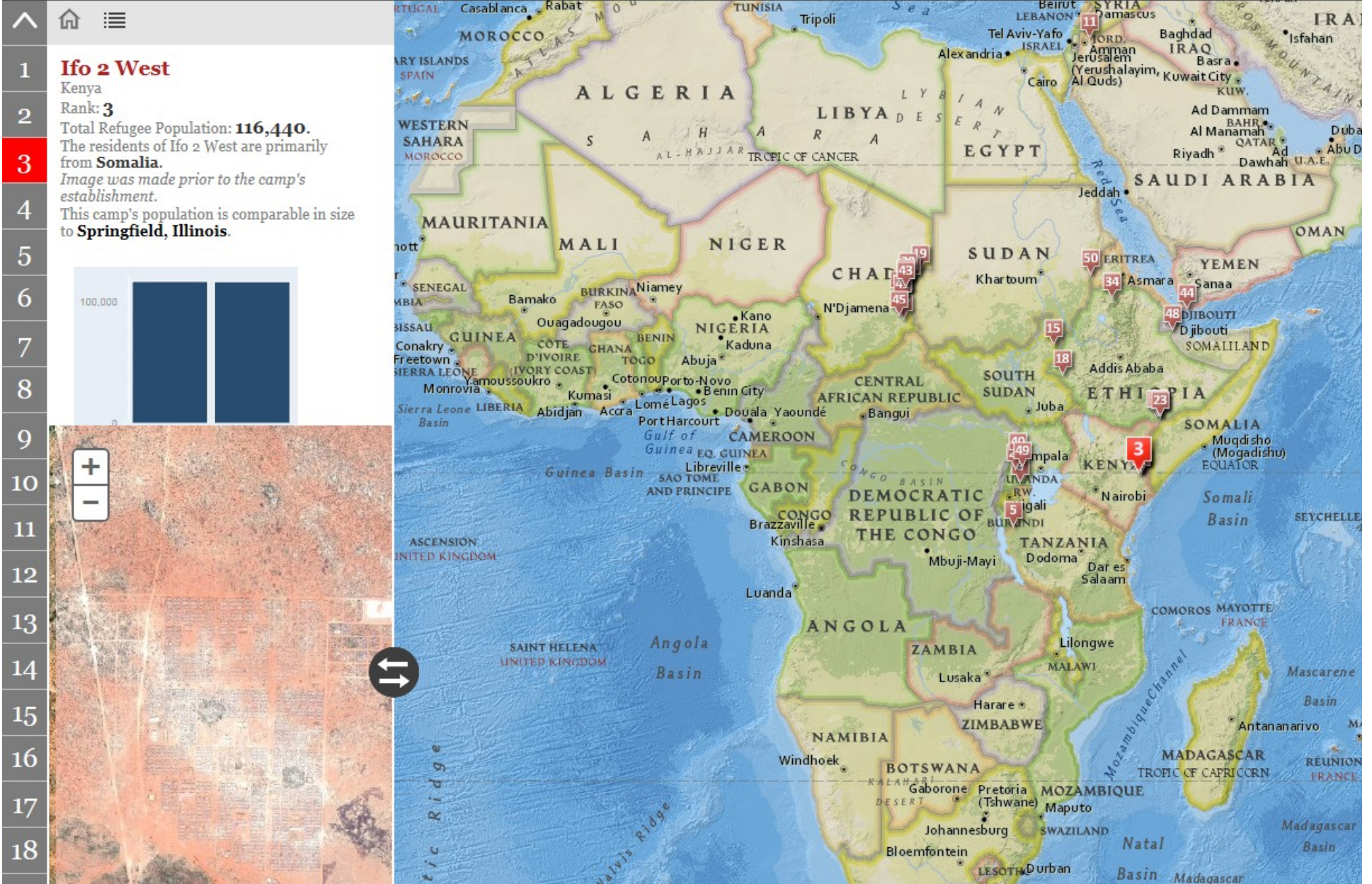
#### Explore Refugee Camps





## Fifty Most Populous Refugee Camps

The United Nations High Commissioner for Refugees administers camps sheltering a vast population of displaced people. These largest camps together house nearly two million people.





Total Population **10,500,234**

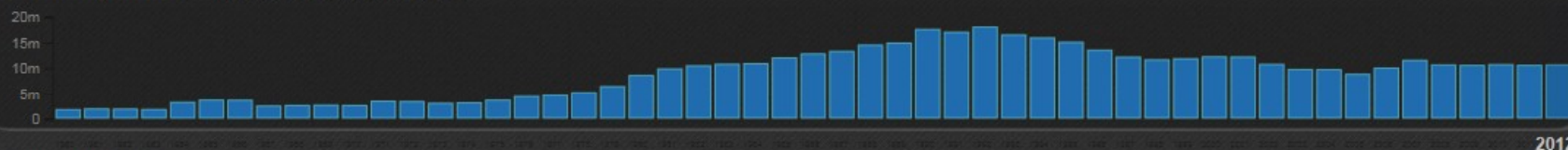
Population Increases  
Compared to previous year **▲ 1,865,023**

Population Decreases  
Compared to previous year **▼ 1,767,581**

Year **◀ 2012 ▶**

### 2012 Total Population

Click on the graphs to select a year.



### Population Change

Compared to previous year.



Country of Asylum



Country of Origin

Selected Country

World

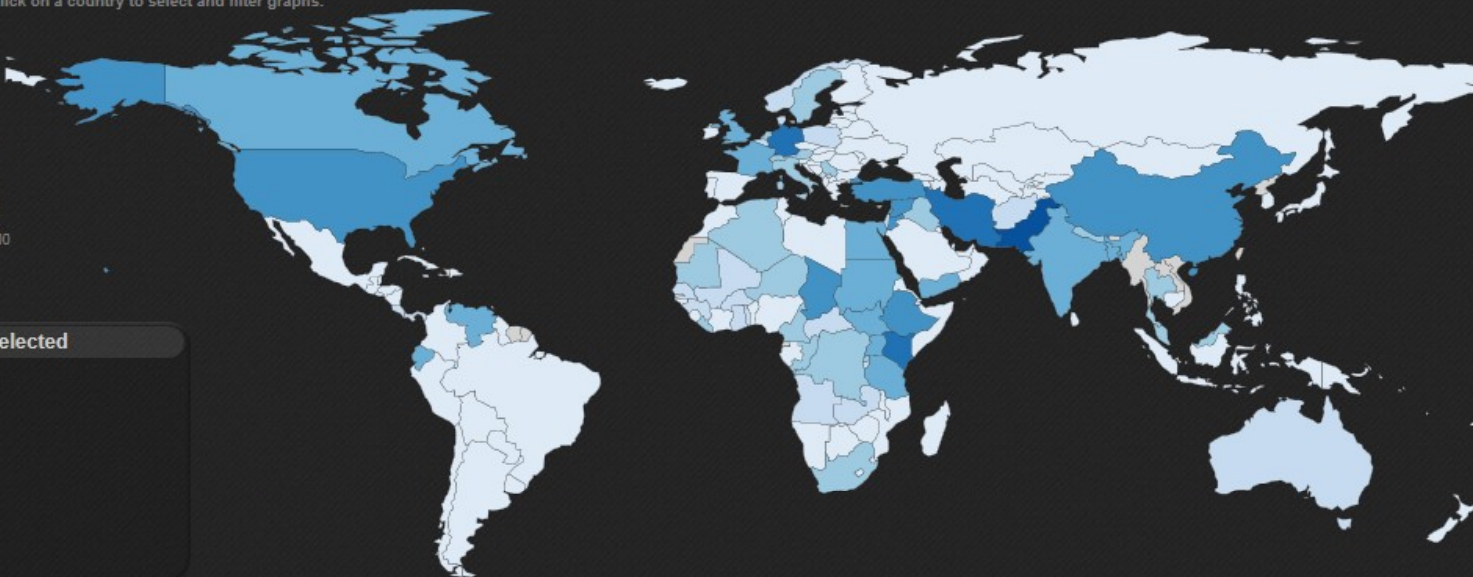
### World Map

Click on a country to select and filter graphs.

#### Refugees by Asylum

- 1 - 10,000
- 10,001 - 50,000
- 50,001 - 100,000
- 100,001 - 250,000
- 250,001 - 500,000
- 500,001 - 1,000,000
- 1,000,001 - 2,500,000
- 2,500,000 +
- Data unavailable

No Country Selected



Developed by the UNHCR Field Information and Coordination Support Section (FICSS) [Email FICSS](#) – DISCLAIMER – The borders and country names on this map do not imply official endorsement by the United Nations. Data may be unavailable for some locations during certain time periods. The historical country borders were adapted from CShapes - Weidmann, Nils B., Doreen Kuse, and Kristian Skrede Gleditsch. 2010. The Geography of the International System: The CShapes Dataset. International Interactions 36 (1).

[Back to the previous page](#)



# UPDATE: AL ZAATARI REFUGEE CAMP, MAFRAQ GOVERNORATE, JORDAN

Analysis with WorldView-2 Data Acquired 7 January 2014 and WorldView-1 Data Acquired 30 September 2013

This map illustrates satellite-detected shelters and other buildings at the Al Zaatari refugee camp in Mafraq Governorate, Jordan. As of 7 January 2014 a total of 28,003 shelters were detected as well as 1,735 infrastructure and support buildings within the 531.8 hectares of the camp. Between 30 September 2013 and 7 January 2014, a total of 4,982 shelters closed or were moved, and a total of 5,868 shelters were constructed, and the number of shelters has thus increased by about 2,171 since the previous

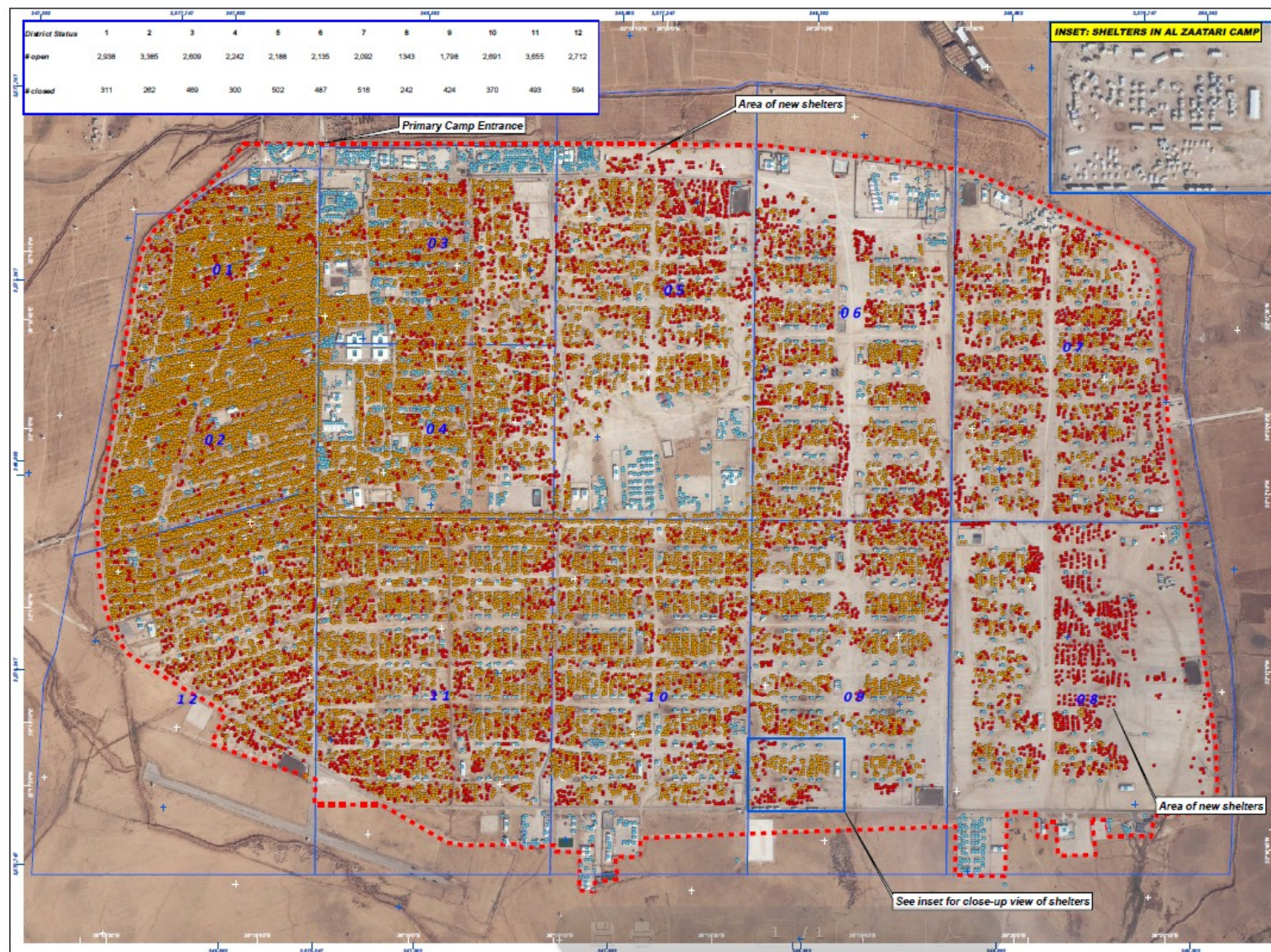
UNITAR/UNOSAT assessment. This indicates an approximate 6.4% increase in the number of shelters between 30 September 2013 and 7 January 2014. This is a preliminary analysis and has not yet been validated in the field; structure locations subject to a spatial error margin of +/- three meters. Shelters grouped under plastic sheeting were estimated by average household size and may be a source of error. Please send ground feedback to UNITAR/UNOSAT.

Refugee Camp

Production Date:  
03/02/2014

Version 1.0

Activation Number:  
CE-2013-0604-SYR



## LEGEND

- Shelter structure (7 January 2014)
- Shelter structure (30 September 2013)
- Camp infrastructure building
- Total Camp Extent
- District Boundary

Map Scale for A3: 1:10,500

0 62.5 125 250 375 500 Meters

Satellite Data (1): WorldView-2  
Imagery Dates: 7 January 2014  
Resolution: 50 cm  
Copyright: DigitalGlobe  
Source: US Department of State, Humanitarian Information Unit, NextView License  
Satellite Data (2): WorldView-1  
Imagery Dates: 30 September 2013  
Resolution: 50 cm  
Copyright: DigitalGlobe  
Source: European Space Imaging  
Analysis: UNITAR / UNOSAT  
Production: UNITAR / UNOSAT  
Analysis conducted with ArcGIS v10.1

Coordinate System: WGS 1984 UTM Zone 37N  
Projection: Transverse Mercator  
Datum: WGS 1984  
Units: Meter

The depiction and use of boundaries, geographic names and related data shown here are not warranted to be error-free nor do they imply official endorsement or acceptance by the United Nations. UNOSAT is a program of the United Nations Institute for Training and Research (UNITAR), providing satellite imagery and related geographic information, research and analysis to UN humanitarian and development agencies and their implementing partners.

This work by UNITAR/UNOSAT is licensed under a Creative Commons Attribution-NonCommercial-



# UNOSAT

Contact information: unosat@unitar.org  
24/7 Hotline: +41 78 487 4998  
www.unitar.org/unosat



# 1996 | Equatorial Guinea Oil Discovered Offshore<sup>2/2</sup>

VIEWING



WORLD REFUGEES

**13,357,072**

POPULATION

5,796,196,182

REFUGEES / POPULATION

1 of 434

TOP 3 OF 163 ORIGINS

AFGHANISTAN

2,674,236

BOSNIA AND

HERZEGOVINA

993,868

LIBERIA

1975 1976 1977 1978 1979 1980 1981 1982 1983 1984 1985 1986 1987 1988 1989 1990 1991 1992 1993 1994 1995 1996 1997 1998 1999 2000 2001 2002 2003 2004 2005



Edouard' s

contribution: [https://wiki.openstreetmap.org/wiki/Refugee\\_Camp\\_Mapping](https://wiki.openstreetmap.org/wiki/Refugee_Camp_Mapping) and <http://data.unhcr.org/jordan/> and <http://data.unhcr.org/jordan/shelter/>

Stephane's contribution: See attached

Matthew work: <http://data.unhcr.org/dataviz/> and <http://data.unhcr.org/horn-of-africa/country.php?id=197>

ESRI Example: <http://storymaps.esri.com/stories/2013/refugee-camps/>

Camp Planning:

<https://play.google.com/store/apps/details?id=lu.hitec.pssu.androidclientsiteplanning>

The portal: <http://data.unhcr.org/syrianrefugees/regional.php>

Zaatari Imagery: <http://www.unitar.org/unosat/node/44/1928>

The refugeeproject